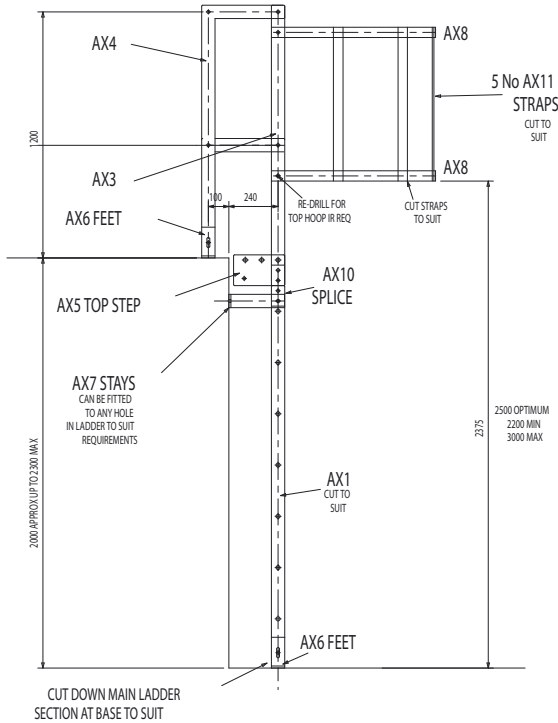
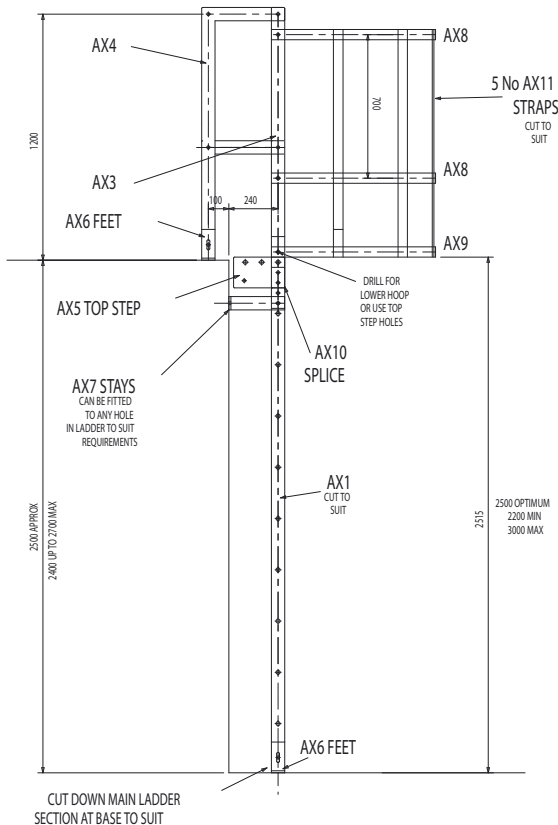


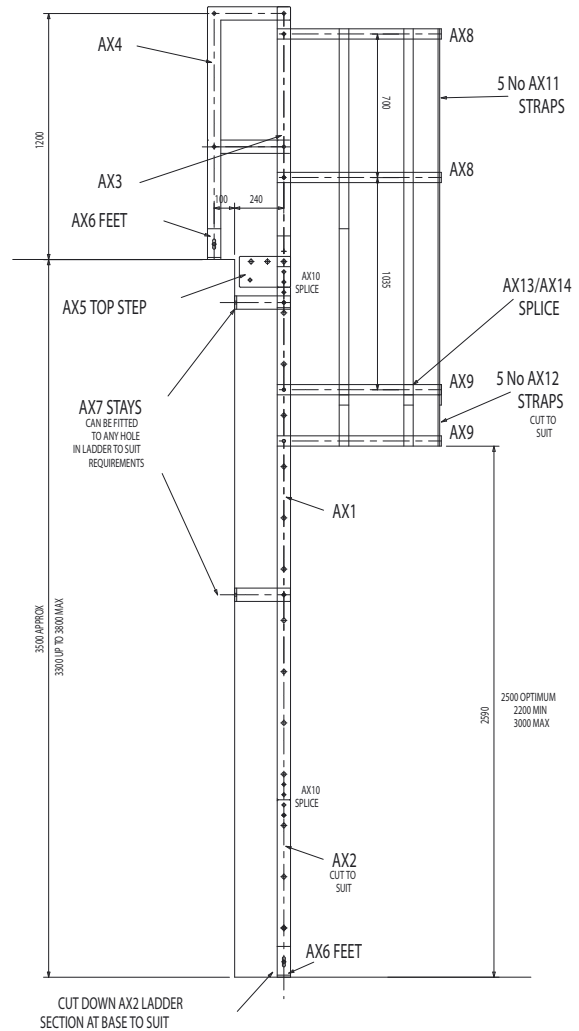
Typical examples - for approx 2000, 2500 or 3500 mm rises:



TYPICAL EXAMPLE FOR APPROX 2000mm RISE
(2000 TO 2300 mm)



TYPICAL EXAMPLE FOR APPROX 2500mm RISE
(2400 TO 2700 mm)



TYPICAL EXAMPLE FOR APPROX 3500mm RISE
(3300 TO 3800 mm)



Self Assembly Ladder System

